

# Prevent Seal

Self-etching light-cured pit & fissure sealant



EXTRA FINE NEEDLE TIPS  
for precise application



POINTED BRUSHES  
for pits cleaning

## ADVANTAGES

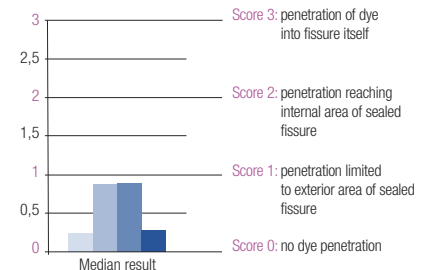
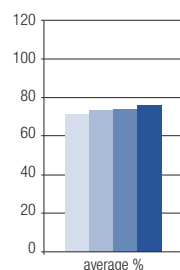
- **Self-etching**  
No etching, no rinsing!  
A real time saver
- **Excellent bonding strength to enamel (21MPa)**  
**Long lasting sealant**
- **Optimal fluidity**  
**Ideal spreading** into the pits and fissures
- **Fluoride release**  
For better tooth decay prevention
- **Provided with:**  
**Pointed brushes** > Easy cleaning of the pits and fissures  
**Extra fine needle tips** > Precise and economic sealant application

## Comparative study of 4 different material sealing ability

used for sealing pits and fissures. *IMEB Laboratory, Faculty of Dentistry Marseille, Dr. Elena Savi, Prof. Corinne Tardieu, Prof. Jacques Déjou*

■ Average depth of sealant penetration into fissure

■ Average depth of dye penetration into sealed fissure



Legend: Clin Pro (light blue), HeliOSEAL (medium blue), Embrace (dark blue), Prevent Seal (darkest blue)

**Conclusion of study:** Prevent Seal performances - penetration of sealant into pits and fissures and quality of peripheral seal - were equivalent to those of conventional sealants requiring etching.

## CLINICAL PROCEDURE



1  
Pre-operative view



2  
Clean under a spray of water



3  
Air dry



4  
Apply the Prevent Seal



5  
Leave undisturbed for 15s



6  
Light-cure for 20s



7  
Post-operative view

### INDICATIONS

Use of the self-etching technical for **the preventive sealing of pits and fissures.**

- The pits & fissures are particularly sensitive to dental decay, as they are difficult to clean
- Sealing with Prevent Seal Self-Etching Pit & Fissure Sealant gives protection to sensitive tooth surfaces by protecting them with a waterproof resin layer, which prevents the penetration of bacteria and enhances oral hygiene

### References

#### Prevent Seal

1,2 ml syringe  
+ 10 extra fine needle tips 25G  
+ 3 pointed brushes PVSEAL-1.2

#### Accessories

20 extra fine needle tips PVSE-25G  
15 pointed brushes PVBRO-15

### Composition

Urethane DiMethacrylate (UDMA) • Bis PhenolA Glycidyl-Methacrylate (BisGMA) • Tri ethylene GlycolDiMethacrylate (TEDGMA) • Hydroxyethyl Methacrylate (HEMA) • Self-etching monomer • Glass charges • Pigments • Photo initiators

*What Doctors think about Prevent Seal?*

**"Prevent Seal? No etching, no rinsing, no problems!"**  
*Dr Bourgeois, Paris*

**"Just clean, apply, and light-cure: what a simplification!"**  
*Dr Lormeau, Lyon*

### HINTS & TIPS

- Instead of small brushes, air abrasion can be used to thoroughly clean the tooth before applying the sealant. No traces of silica should remain as this impairs the adhesion of Prevent Seal
- The prepared surface must be thoroughly dried before Prevent Seal is applied, as the product is hydrophobic
- The small brushes are suitable for autoclaving
- Prevent Seal is a composite resin that is compatible with all other composites on the market